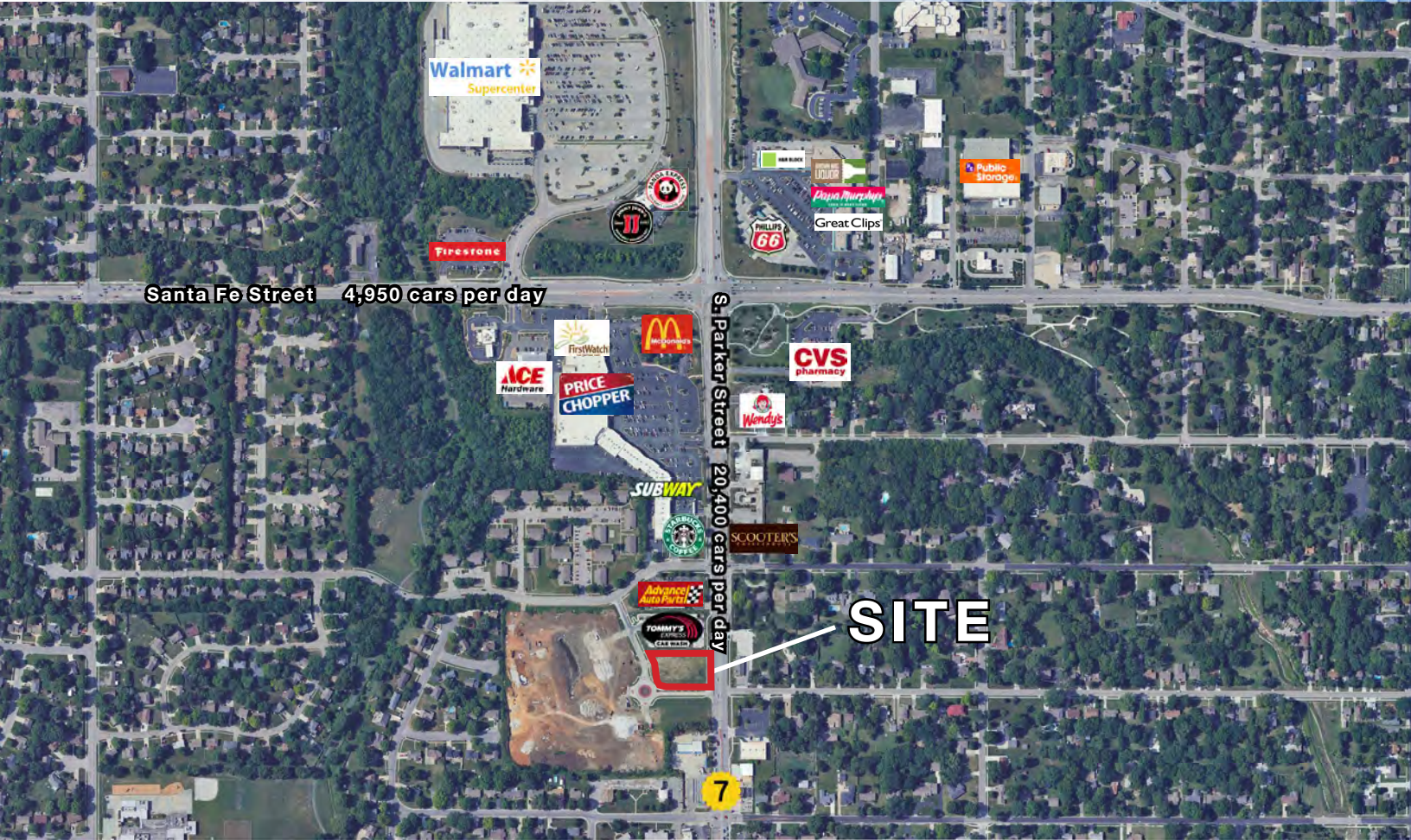




QUIKTRIP EXCESS GROUND FOR SALE

255 S. Parker Street, Olathe, Kansas



SALE PRICE: \$27/SF | 33,072 SF AVAILABLE

DEMOGRAPHICS

	1 mile	3 miles	5 miles
Estimated Population	8,863	80,006	155,015
Avg. Household Income	\$88,599	\$78,130	\$82,887

- Hard corner pad site
- Located in the K-7 and Santa Fe corridor
- New multifamily development to the west
- Surrounding co-tenants include: Starbucks, Chipolte, Tommy's Express Carwash, First Watch, and many more



CLICK HERE TO VIEW MORE LISTING INFORMATION

For More Information Contact:

Exclusive Agents

PHIL PECK | 816.412.7364 | ppeck@blockandco.com

DAVID BLOCK | 816.412.7400 | dblock@blockandco.com

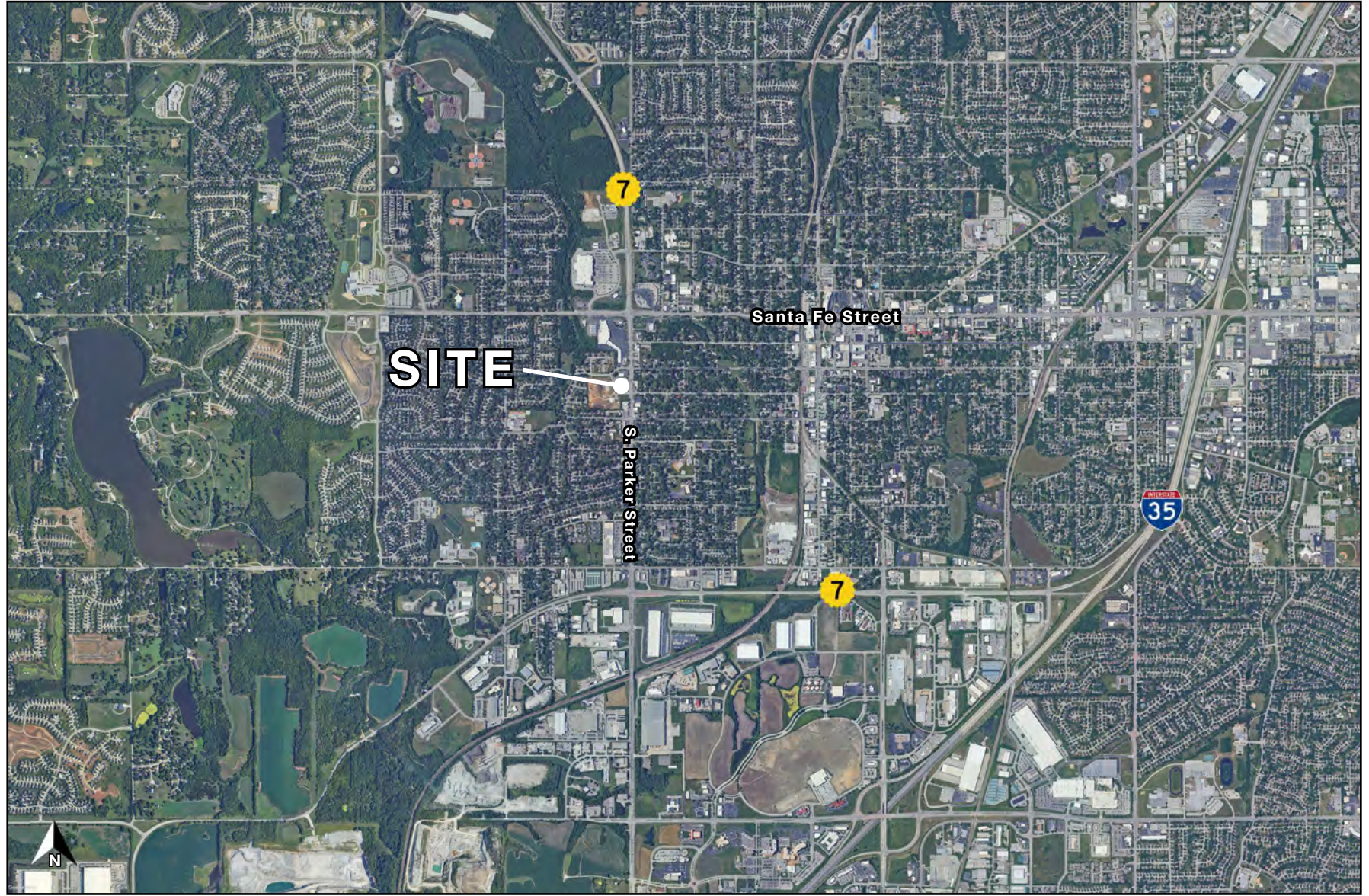




QUIKTRIP EXCESS GROUND FOR SALE

255 S. Parker Street, Olathe, Kansas

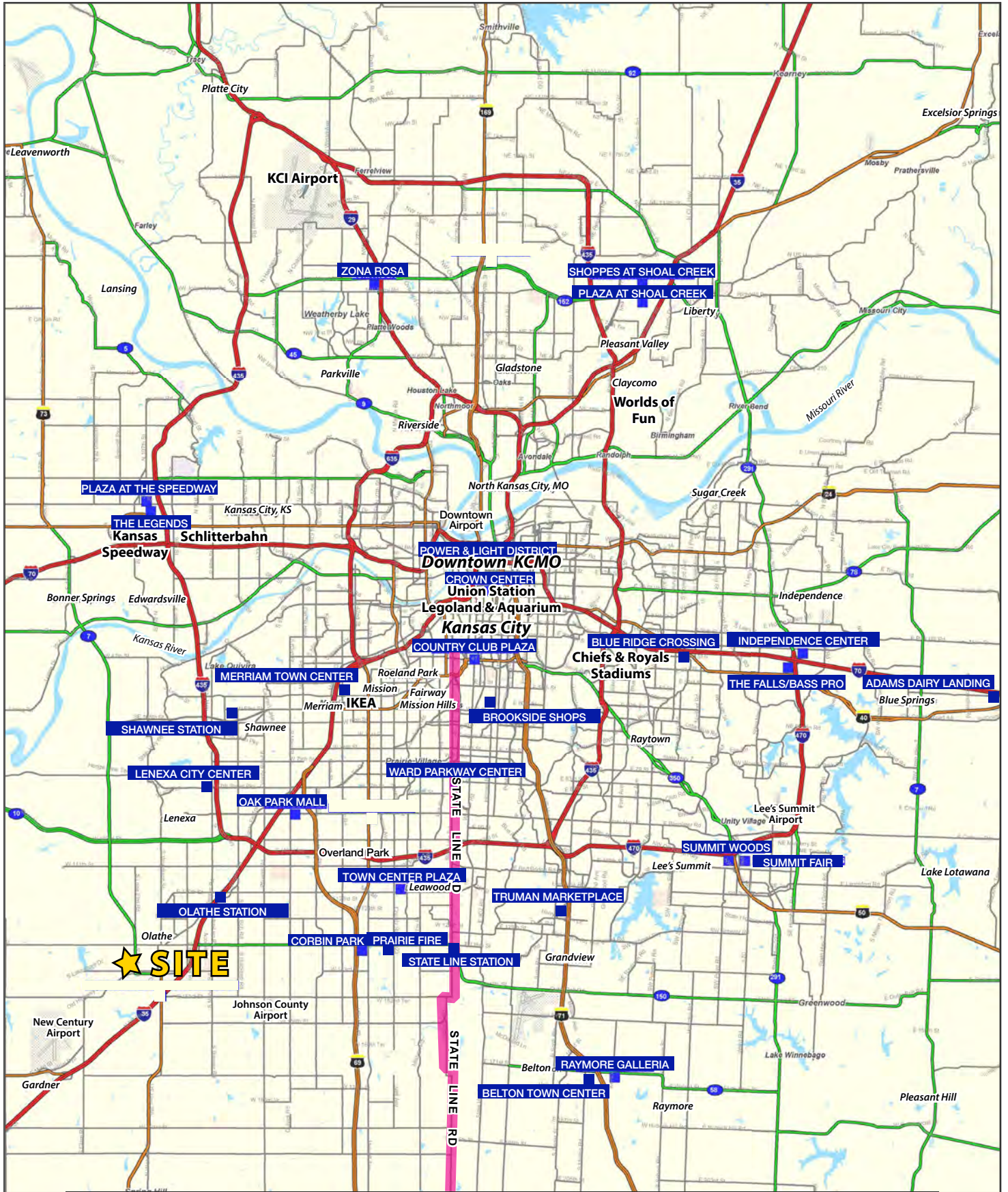
AERIAL





QUIKTRIP EXCESS GROUND FOR SALE

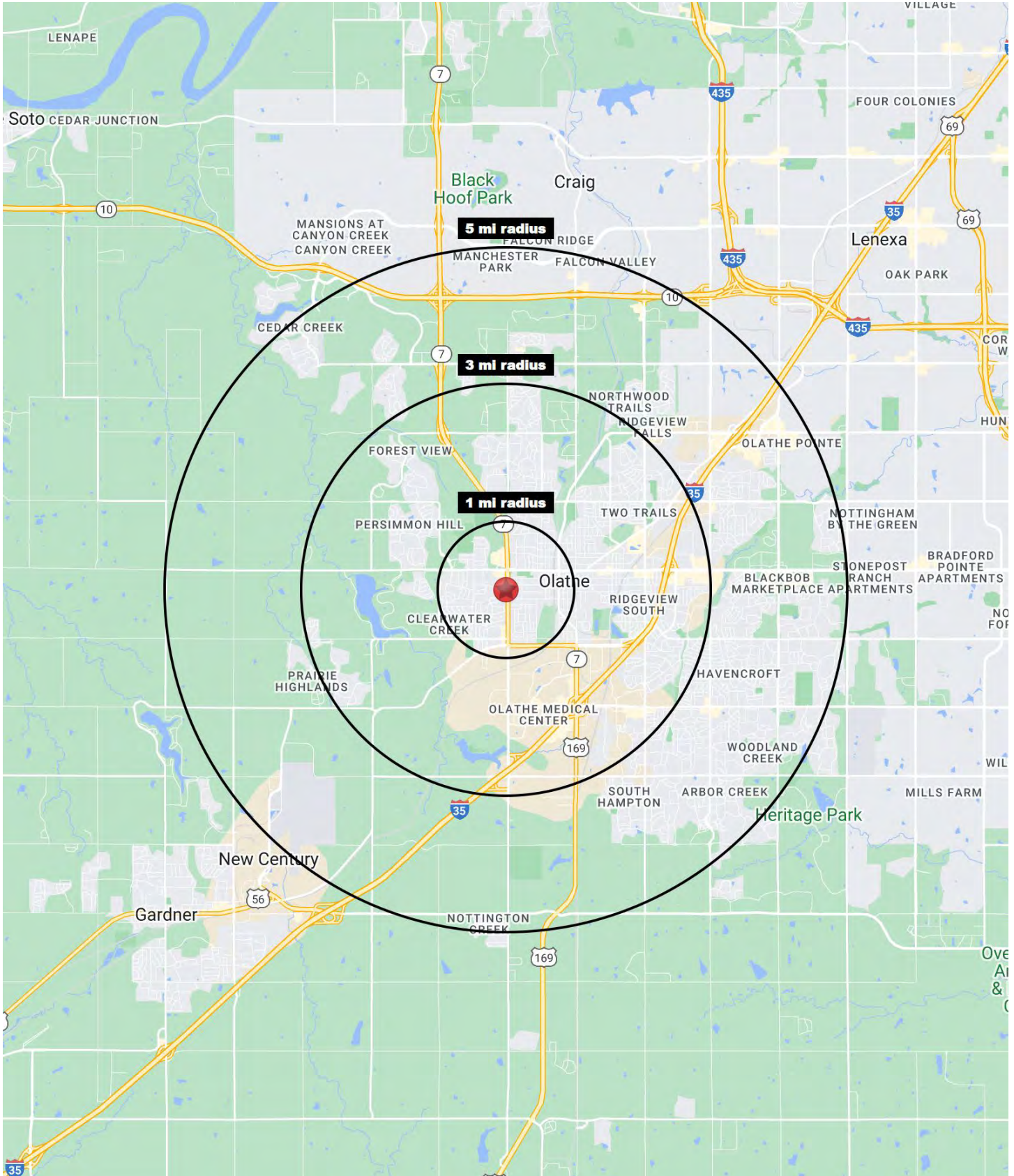
255 S. Parker Street, Olathe, Kansas





QUIKTRIP EXCESS GROUND FOR SALE

255 S. Parker Street, Olathe, Kansas





QUIKTRIP EXCESS GROUND FOR SALE

255 S. Parker Street, Olathe, Kansas

255 S. Parker Street Olathe, KS 66061	1 mi radius	3 mi radius	5 mi radius
Population			
2024 Estimated Population	12,175	62,444	138,521
2029 Projected Population	12,328	64,144	142,695
2020 Census Population	11,661	59,654	135,828
2010 Census Population	11,321	54,271	122,381
Projected Annual Growth 2024 to 2029	0.3%	0.5%	0.6%
Historical Annual Growth 2010 to 2024	0.5%	1.1%	0.9%
2024 Median Age	33.7	35.4	36.2
Households			
2024 Estimated Households	4,421	22,744	49,677
2029 Projected Households	4,575	23,674	51,804
2020 Census Households	4,103	21,462	47,532
2010 Census Households	4,008	19,446	42,747
Projected Annual Growth 2024 to 2029	0.7%	0.8%	0.9%
Historical Annual Growth 2010 to 2024	0.7%	1.2%	1.2%
Race and Ethnicity			
2024 Estimated White	67.2%	74.1%	77.1%
2024 Estimated Black or African American	7.8%	7.5%	6.8%
2024 Estimated Asian or Pacific Islander	3.1%	3.6%	4.6%
2024 Estimated American Indian or Native Alaskan	0.6%	0.5%	0.4%
2024 Estimated Other Races	21.3%	14.3%	11.1%
2024 Estimated Hispanic	22.3%	14.8%	11.3%
Income			
2024 Estimated Average Household Income	\$100,227	\$121,103	\$139,678
2024 Estimated Median Household Income	\$80,160	\$102,353	\$115,545
2024 Estimated Per Capita Income	\$36,423	\$44,244	\$50,185
Education (Age 25+)			
2024 Estimated Elementary (Grade Level 0 to 8)	6.2%	2.9%	1.9%
2024 Estimated Some High School (Grade Level 9 to 11)	5.4%	4.0%	2.8%
2024 Estimated High School Graduate	23.2%	19.6%	16.4%
2024 Estimated Some College	19.7%	20.4%	19.1%
2024 Estimated Associates Degree Only	9.8%	9.0%	8.4%
2024 Estimated Bachelors Degree Only	24.2%	27.3%	31.7%
2024 Estimated Graduate Degree	11.5%	16.8%	19.6%
Business			
2024 Estimated Total Businesses	383	1,901	3,902
2024 Estimated Total Employees	4,134	26,058	58,195
2024 Estimated Employee Population per Business	10.8	13.7	14.9
2024 Estimated Residential Population per Business	31.8	32.8	35.5

©2024, Sites USA, Chandler, Arizona, 480-491-1112 Demographic Source: Applied Geographic Solutions 5/2024, TIGER Geography - RS1